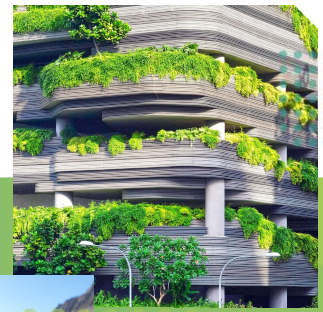


TECHNYL[®] SAFE

Food and water contact



Comprehensive range of water-certified and food contact compliant materials, based on PA6, PA66 & PA6.10.

Building a strong, reliable and smart urban environment from water distribution to water consumption.



Sustainable development & human care

MAIN BENEFITS

- **Drinking water certification** (WRAS, KTW-BWGL, ACS, NFS 61) and food contact compliance (US FDA, EU).
- **Good Manufacturing Practices** ensuring reliable quality.
- **Good surface finishing** for optimal aesthetics and design freedom.
- **Outstanding resistance to different fluids**, including heated water thanks to hydrolysis and chlorine resistance.
- **Optimal durability** thanks to weldline strength and burst pressure resistance.
- **Optimal processing delivering productivity** and sustainability benefits.
- **Well-suited for the replacement of metals** and other high-temperature materials.

MARKETS



WATER DISTRIBUTION NETWORKS



HEATING & SANITARY



HOME APPLIANCES



BUILDING & CONSTRUCTION

FULL EUROPEAN AND AMERICAN CERTIFICATIONS



KEY APPLICATIONS



water meters



heat exchangers



pipes & fittings



circulation pumps



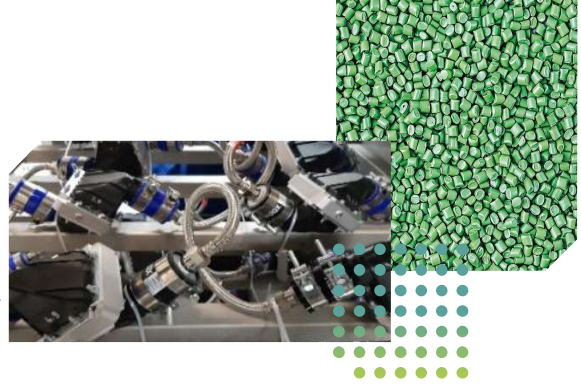
electro-valves



water purifiers and desalination systems

TECHNYL® SAFE

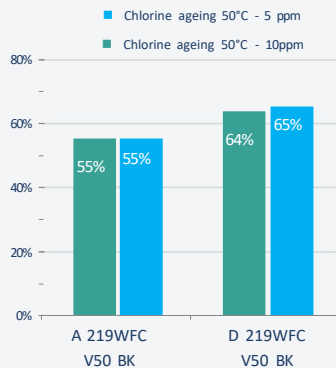
Food and water contact



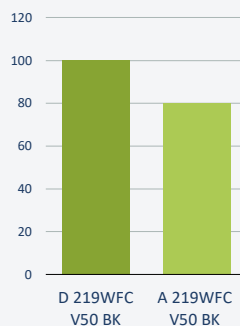
PROOF POINTS

- **2 chlorine test benches** providing measurements on specimens and end-parts
- **Detailed evaluation of degradation kinetics**, including assessing the combined effects of chlorine ageing and abrasion by the water flow

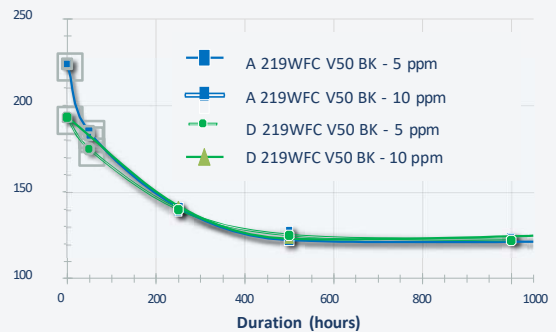
Tensile Strength Retention from DAM (%)



Burst pressure after 2000h of ageing (bar)



Tensile Strength from DAM (MPa)



- **Specifically formulated materials** to prevent further degradation even as chlorine content is increased (reference graph)
- **High burst pressure resistance** thanks to very high welding lines resistance (reference graph)

KEY PRODUCTS

FOOD CONTACT GRADES
PA6 based

TECHNYL® SAFE C 216PWFC NC

TECHNYL® SAFE C 216FC NC

TECHNYL® SAFE C 226FC NC

TECHNYL® SAFE C 216FC V30 NC

TECHNYL® SAFE C 216FC V30 BK

FOOD CONTACT GRADES
PA66 based

TECHNYL® SAFE A 216FC NC

TECHNYL® SAFE A 216FC V30 BK

TECHNYL® SAFE A 216FC V30 NC

TECHNYL® SAFE A 222FFC NC

TECHNYL® SAFE A 221FC NC

TECHNYL® SAFE A 302FC NC

TECHNYL® SAFE A 402FC NC

FOOD CONTACT & WATER CONTACT GRADES

TECHNYL® SAFE D 219WFC V30 BK

TECHNYL® SAFE D 219WFC V50 BK

TECHNYL® SAFE A 219WFC V30 NC/BK

TECHNYL® SAFE A 219WFC V50 BK

TECHNYL® SAFE A 246WFC NC

TECHNYL® IS EXCLUSIVELY PRODUCED AND COMMERCIALIZED BY DOMO WORLDWIDE



www.domochemicals.com



caring
is our formula